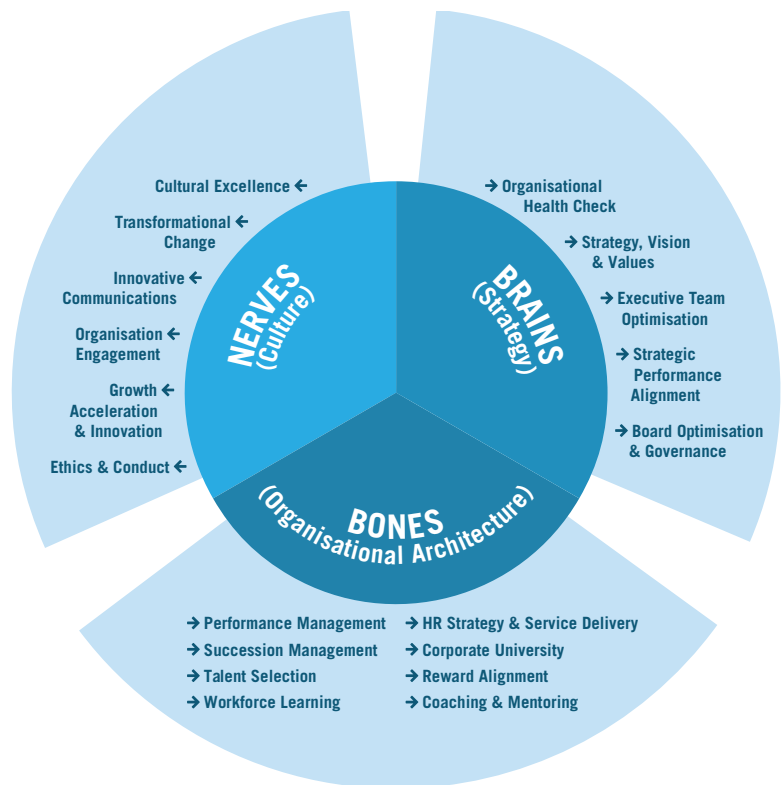




We believe the hallmark of successful human capital consulting is delivering measurable value. We also believe work needs to be engaging and meaningful if organisations are to thrive.

According to our research, optimising individual and workforce performance depends on the interplay and effectiveness of three key pillars of growth: **Strategy, Organisational Architecture, and Culture.**

We call these three pillars the **Brains-Bones-Nerves (BBN)** of an organisation. Just like the human body needs all three of these systems working together in harmony to ensure longevity, a business needs strong alignment between these three pillars to maximise commercial success.





We provide actionable solutions to help leadership teams address tough challenges, such as:

- Responding to continuous disruption with differentiating strategy and vision
- Aligning the executive team to perform at peak capability
- Future-proofing the organisation with the right talent, performance, and rewards structures
- Embedding the right culture, values, and behaviours critical for organisation success
- Designing Learning & Development architectures for all levels of the organisation
- Leveraging innovation and technology for work force performance and engagement
- Maximising awareness and understanding through innovative communications
- Exercising Board governance as a business differentiator

Our purpose is clear – to deliver human capital solutions that improve individual and workforce performance.

About Iclif

The Iclif Leadership and Governance Centre was established and funded by The Central Bank of Malaysia as a non-profit organisation in 2003. We are the only organisation in the APAC region focusing on both leadership and corporate governance, providing highly practical, holistic and relevant leadership development and corporate governance globally.

Our faculty and consultant team consists of professionals from across a wide spectrum of industries and geographies. Each member brings a wealth of knowledge and experience from elite academic institutions or Fortune 500 companies. While based mainly in Asia, their extensive experience provides them with an all-encompassing global perspective for Asia and beyond.

Our Vision

To be the most respected Asia-based Leadership and Governance Centre.

Our Mission

Developing leaders and directors for a better future.

In doing so, We:

- **Help individuals** harness the leadership energy within themselves to become more effective, authentic and outstanding leaders.
- **Support leaders** in designing their organisation and talent strategies to optimise efficiency and growth while empowering them to explore possibilities for greater sustainability and impact.
- **Aid boards** in strengthening governance effectiveness to drive long-term sustainability of their organisations.

The Iclif Leadership
and Governance Centre
(625729-W)

Level 5, Block A, Platinum Sentral,
Jalan Stesen Sentral,
Kuala Lumpur Sentral,
50470 Kuala Lumpur,
Malaysia

For more information, please visit www.iclif.org or speak with our Human Capital Consulting (HCC) team:

Michele A.Sagan
+603 2725 9039
michele@iclif.org

Peter J. Webb
+603 2725 9066
peterw@iclif.org

Paul B. Surprenant
+603 2725 9013
paulsurprenant@iclif.org

General Line
+603 2725 9000
contact@iclif.org